

Overview & Scrutiny Committee

Monday 20 January 2025

10.30 am

Ground Floor Meeting Room G02A - 160 Tooley Street, London
SE1 2QH

Supplemental Agenda No.4

List of Contents

Item No.	Title	Page No.
5.	POLICY AND RESOURCES STRATEGY 2025-26 Enclosed is the 'Budget Contextual Information'	1 - 7

Contact

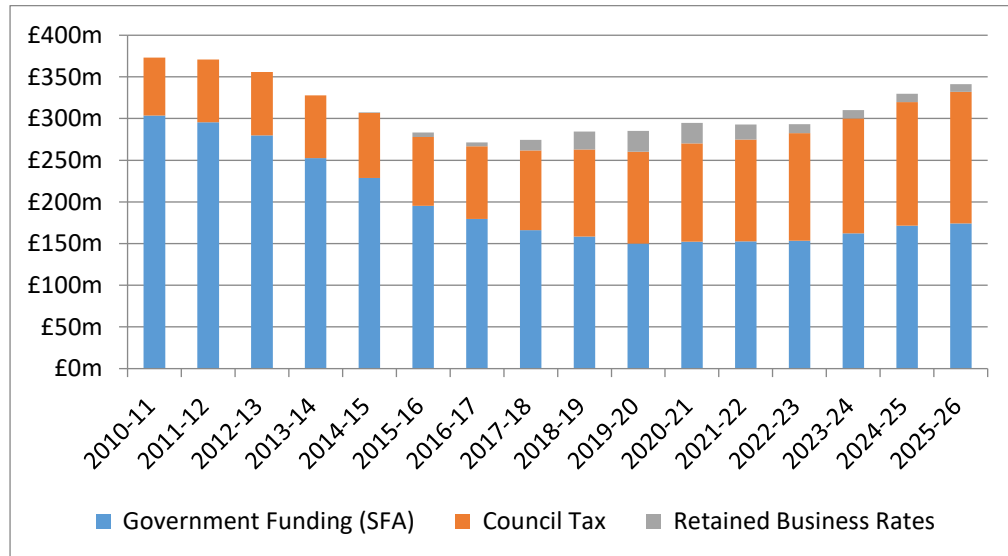
Amit Alva on 020 7525 0496 or email: amit.alva@southwark.gov.uk
Webpage: www.southwark.gov.uk

Date: 17 January 2025.

Budget Contextual Information

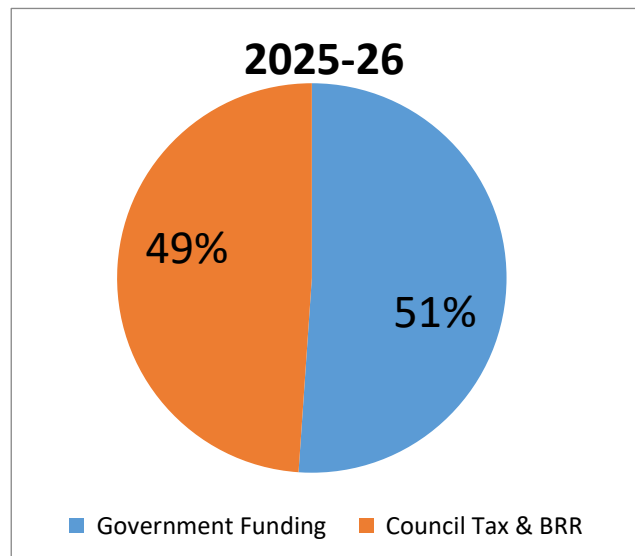
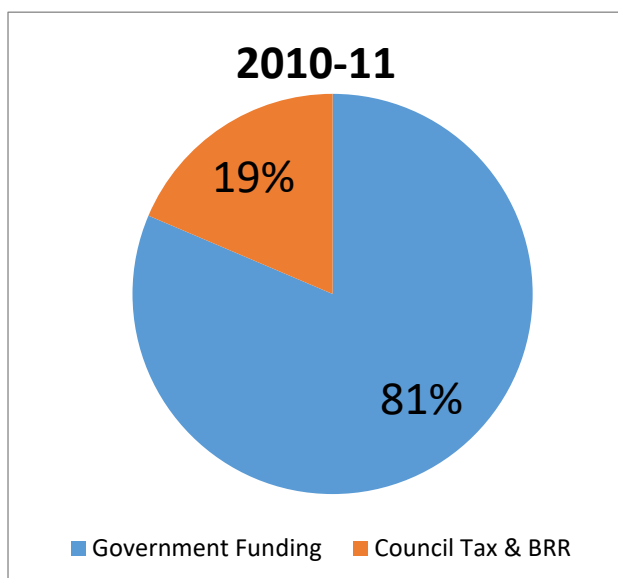
Funding Trend 2010-11 to 2025-26

The Budget Requirement is the amount of expenditure that is funded by general support from central government, council tax and retained business rate growth. The following graph shows how the Budget Requirement has changed over the period 2010-11 to 2025-26.

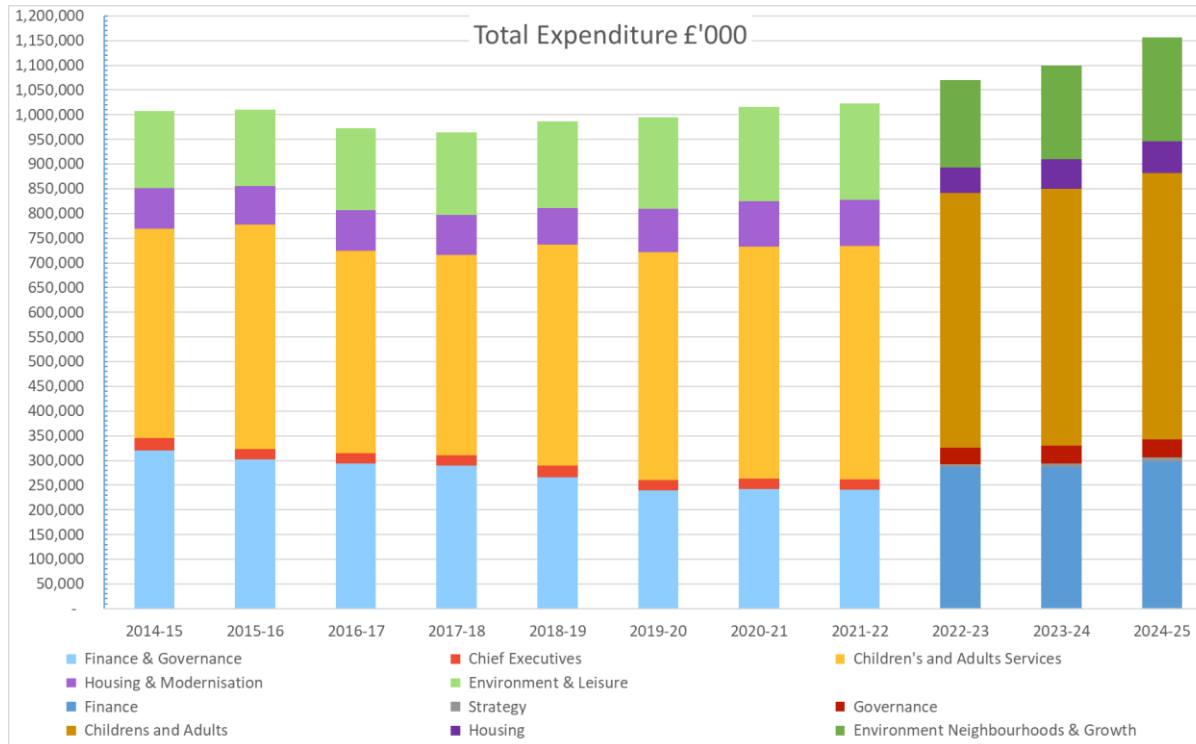


Key Messages

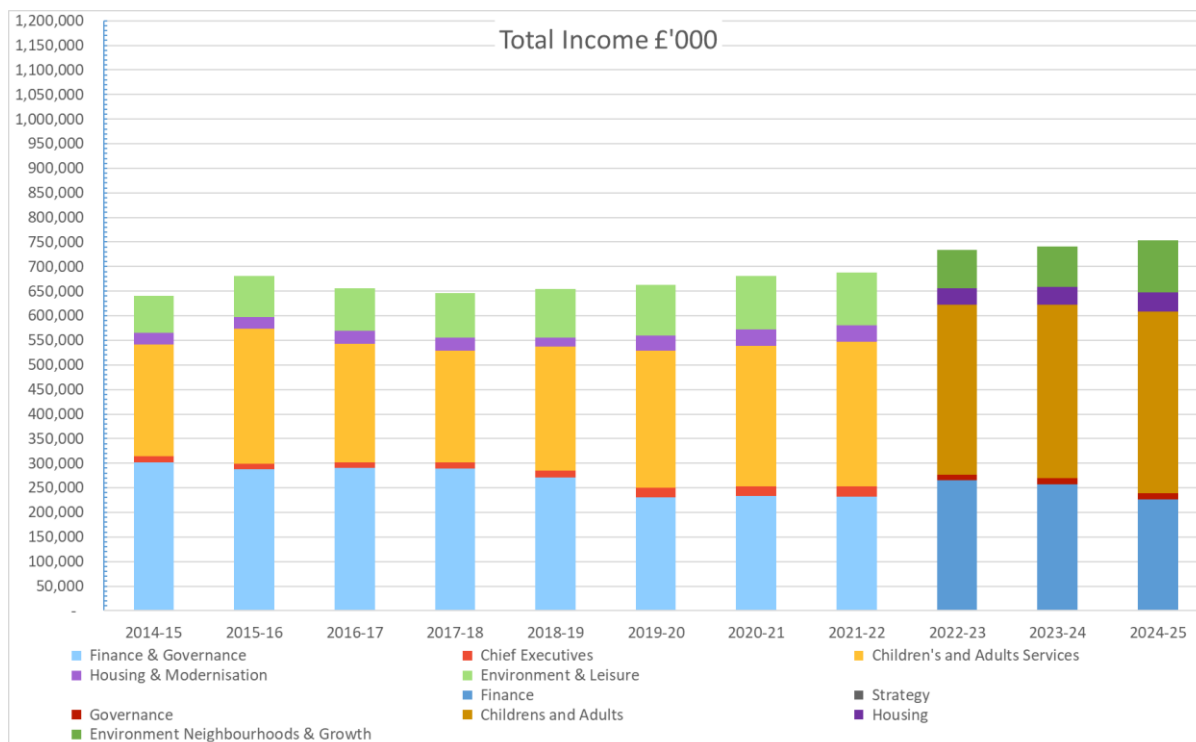
- Total general funding has decreased from £373m in 2010-11 to £341m in 2025-26, a reduction of £32m.
- Locally generated receipts (council tax and retained business rate growth) have increased over the same period by £97.5m highlighting the increased reliance on locally generated income.



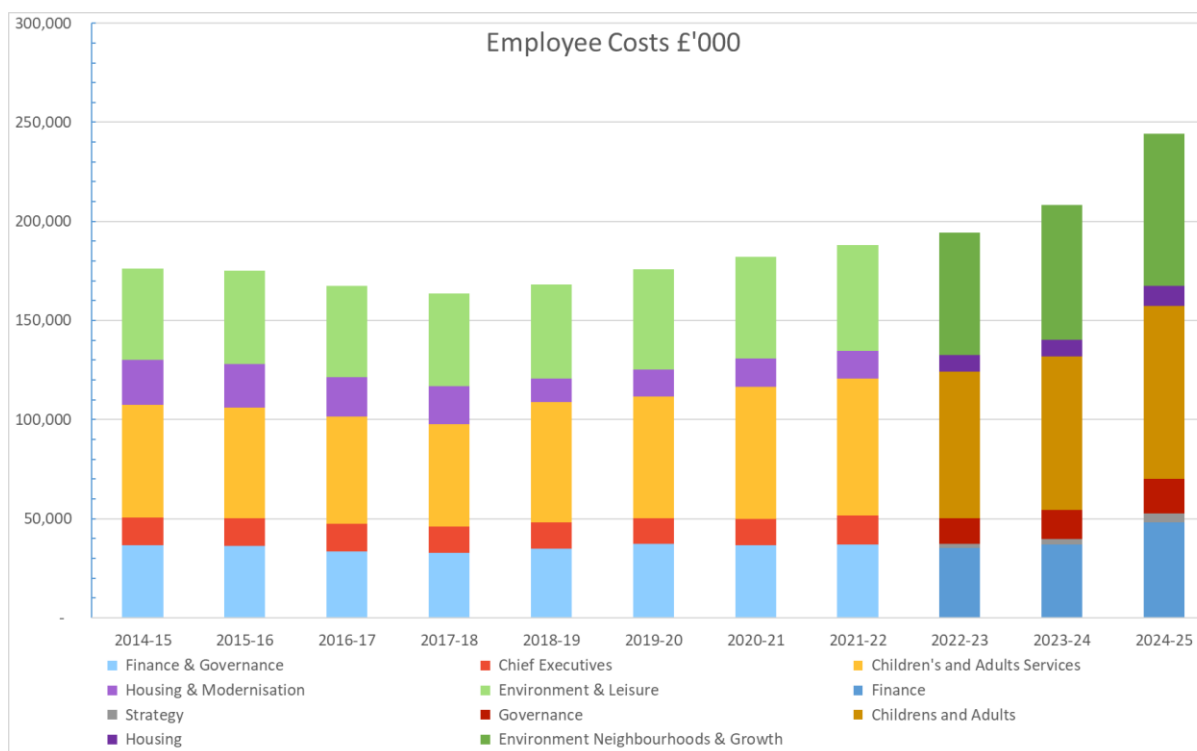
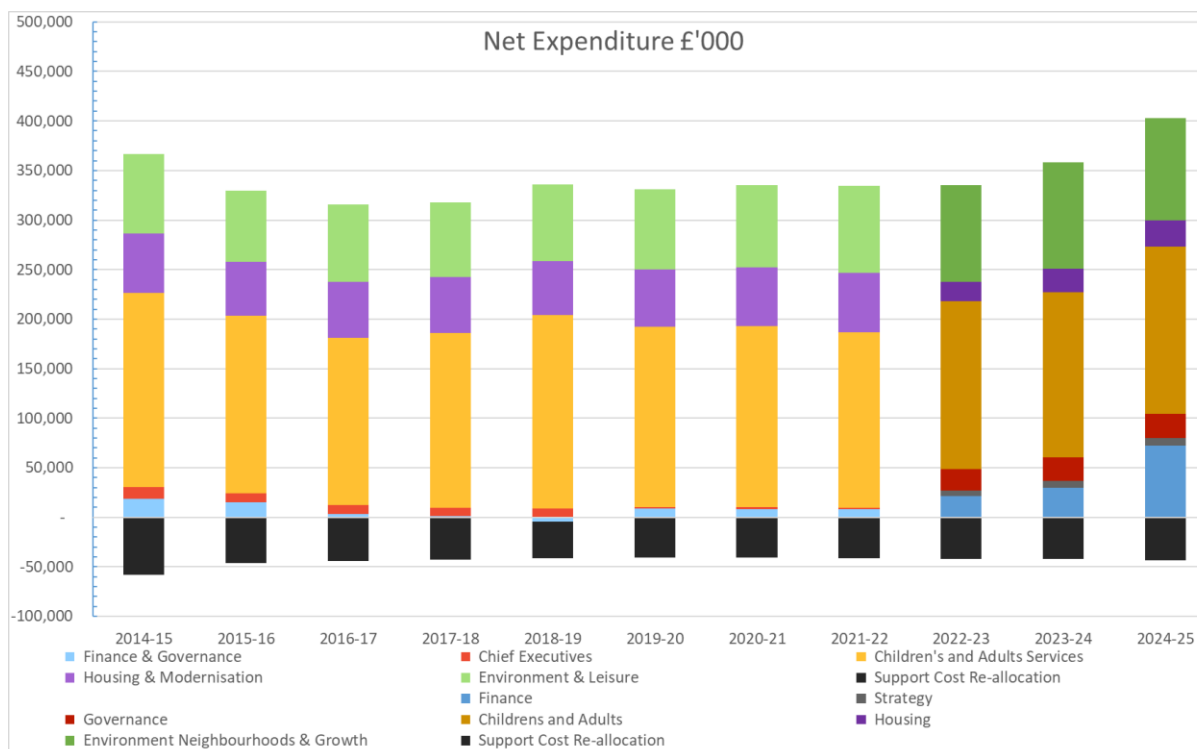
COMPARISON OF SOUTHWARK COUNCIL REVENUE BUDGETS OVER A 10 YEAR PERIOD

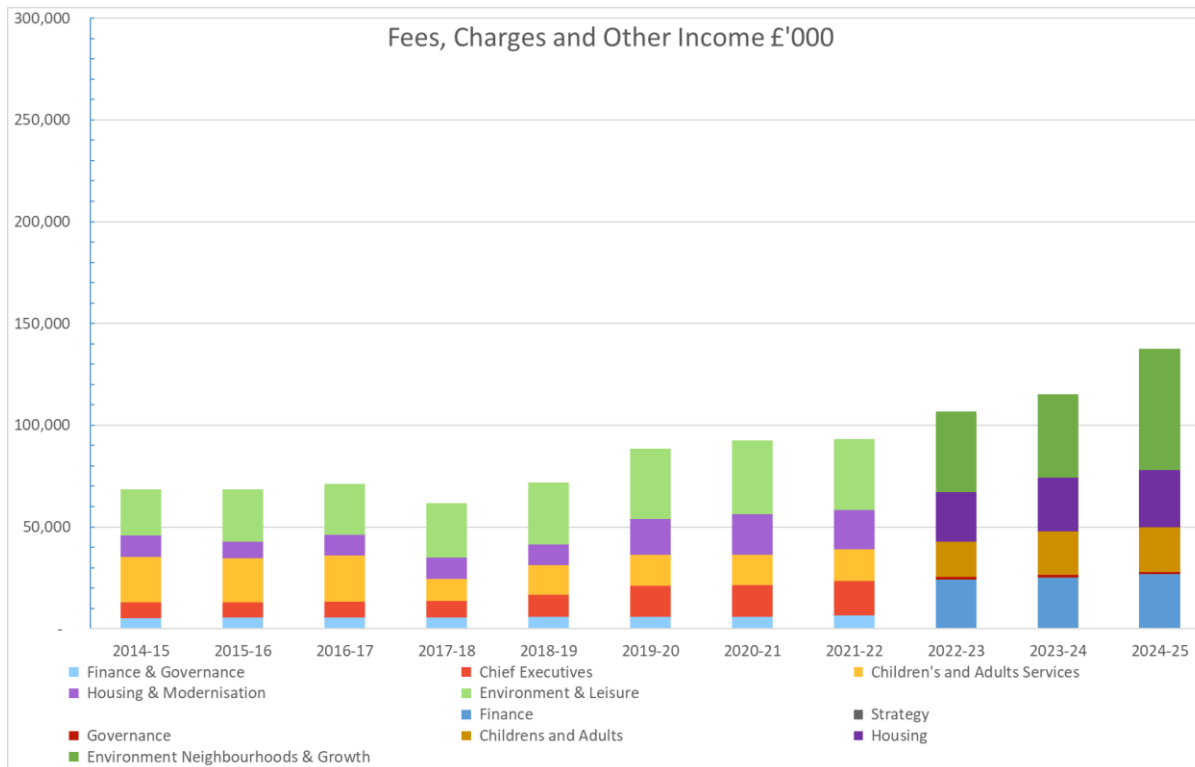


Expenditure: Cash change over 10 years of £149.691m (15%), Real terms change of -£161.372m (-16%)

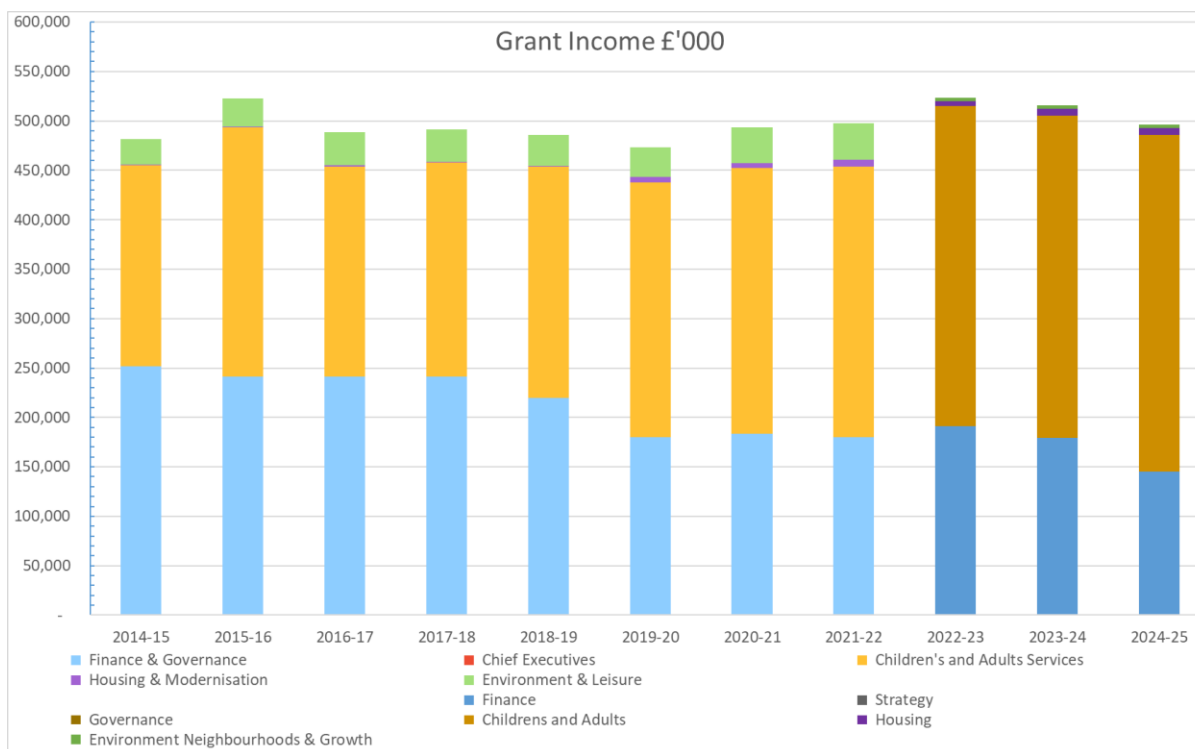


Income: Cash change over 10 years of £98.701m (14%), real terms change over 10 years of -£115.727m (-17%)





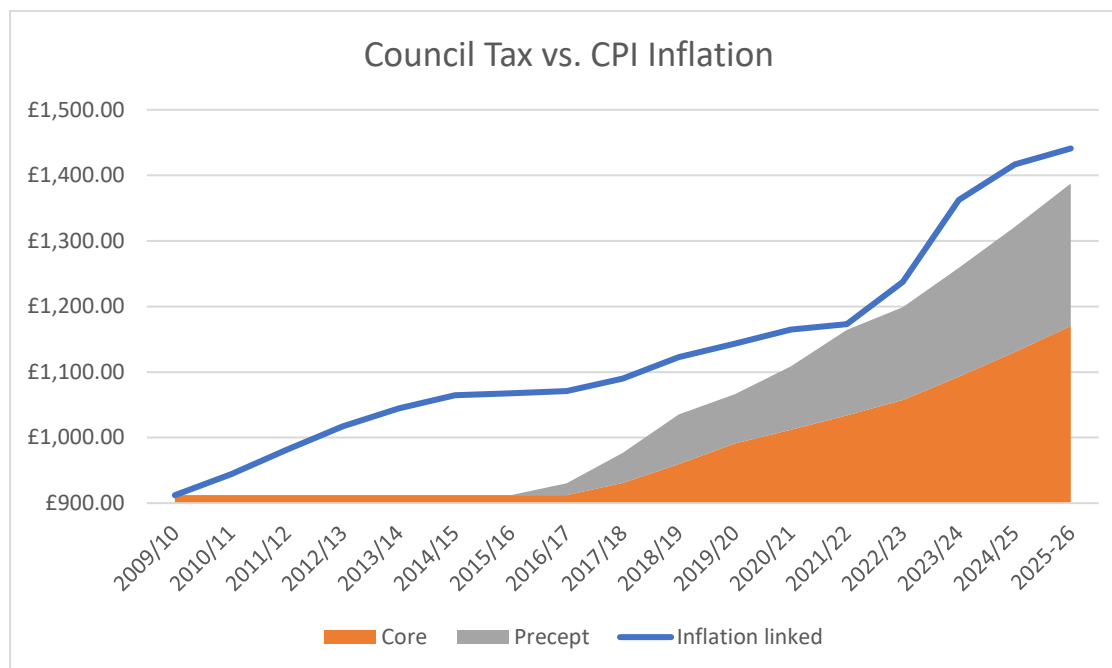
Fees, Charges & Other Inc: Cash change over 10 years of £68.980m (101%), Real terms change of £32.043m (47%)



Grant Income: Cash change over 10 years of £14.815m (3%), Real terms change over 10 years of -£118.593m (-25%)

Comparable table of London local authorities council tax collection rates

Authority	2022-23	2023-24	Change on previous year	Change since 2010/11
	% collected	% collected	% collected	% collected
Haringey	96.2%	95.2%	-1.0%	1.2%
Redbridge	96.9%	96.8%	-0.2%	1.6%
Hounslow	97.5%	97.3%	-0.2%	0.7%
Barking and Dagenham	93.6%	93.5%	0.0%	0.7%
Kingston upon Thames	98.8%	98.6%	-0.2%	0.2%
Southwark	92.9%	92.3%	-0.6%	-0.4%
Greenwich	94.5%	94.0%	-0.5%	-0.3%
Sutton	98.6%	98.3%	-0.3%	-0.2%
Tower Hamlets	95.2%	92.1%	-3.1%	-3.0%
Merton	97.3%	96.5%	-0.8%	-0.7%
Hillingdon	97.0%	96.3%	-0.7%	-0.7%
Croydon	95.9%	94.6%	-1.3%	-1.3%
Ealing	96.8%	96.3%	-0.5%	-0.8%
Havering	96.5%	96.3%	-0.2%	-0.5%
Harrow	96.6%	96.7%	0.1%	-0.3%
Kensington and Chelsea	96.0%	97.4%	1.4%	0.9%
Richmond upon Thames	98.4%	98.5%	0.1%	-0.4%
Bromley	97.1%	97.0%	-0.2%	-0.6%
Waltham Forest	95.3%	95.2%	-0.2%	-0.6%
Barnet	95.0%	94.5%	-0.5%	-1.1%
Bexley	95.2%	95.4%	0.1%	-0.7%
Lambeth	93.8%	93.7%	-0.1%	-0.9%
Islington	94.4%	94.3%	-0.1%	-1.2%
Wandsworth	96.7%	97.7%	1.0%	-0.2%
Lewisham	92.8%	92.2%	-0.6%	-1.9%
Newham	90.3%	89.4%	-0.9%	-2.3%
Brent	93.4%	92.2%	-1.2%	-3.4%
Enfield	93.3%	93.6%	0.2%	-2.2%
Westminster	93.6%	93.6%	0.1%	-2.4%
Camden	94.0%	94.1%	0.1%	-2.4%
City of London	96.8%	97.6%	0.8%	-1.8%
Hammersmith and Fulham	92.5%	93.7%	1.2%	-1.8%
Hackney	78.3%	88.8%	10.6%	-4.2%



- The above graph highlights that Southwark Council's level of council tax remains below inflation.

Comparative Business Rates and Council Tax Collection Rates

Non-domestic rates - collection rates 2015-16 to 2023-24									
	% collection rate								
	2015-16	2016-17	2017-18	2018-19	2019-20	2020-21	2021-22	2022-23	2023-24
England	98.2	98.2	98.4	98.3	98	98	95.5	96.8	97.2
Inner London Boroughs	98.6	98.6	98.8	98.6	98.3	98.3	93.2	96.0	97.1
Southwark	99.5	99.3	99.4	99.4	99.7	94.1	99	99.1	98.6

Council tax - in-year collection rates 2015-16 to 2023-24									
	% collection rate								
	2015-16	2016-17	2017-18	2018-19	2019-20	2020-21	2021-22	2022-23	2023-24
England	97.1	97.2	97.1	97	96.8	95.7	95.8	96.0	95.9
Inner London Boroughs	95.8	96	95.9	96	95.6	91.9	91.1	93.0	93.6
Southwark	95.2	95.9	95.5	95.9	95.4	92.9	91.9	92.9	92.3